

Revolutionized Curtain Wall System

True Innovation for the Façade Industry



TALON WALL®

Elegant Simplicity®



Install your
TALON WALL®
in 1.5 total
man hours
per unit!

GET A GRIP ON COST!

Double your facade revenue while decreasing your crew size. Entekk's **TALON WALL**® installs with half of the crew size required for a typical window wall or curtain wall system with an enclosure rate greater than the most efficient curtain wall systems available.

The **TALON WALL**® by Entekk Group, LTD is a patented, fully engineered, unitized and factory glazed, revolutionary curtain wall system with fixed and operable components. The Talon Anchor® system accommodates complex geometry in all 3 planes, plus it's easy, efficient and non-obtrusive. **TALON WALL**® systems are far less complex to fabricate and install than all other competitive systems, by requiring less training and skill level than any other typical system. Each **TALON WALL**® system has only two components to install – the finished unit and single pieces of floor trim. *That's It!* No loose parts are scattered on job sites to get lost or damaged. The anchor is built into the unit 'as shipped' to your site!

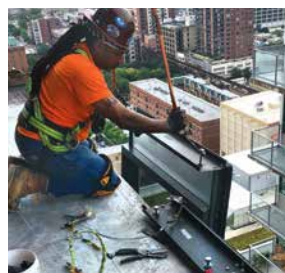




TALON WALL® Features and Benefits

- No anchor brackets or hardware fixtures are required to secure to the structure.
- Allows up to 1-1/4" construction tolerance in all axes and 3/4" vertical live load movement capability.
- Meets or exceeds project specifications with class leading thermal, structural, air and water performance.
- Requires no acoustical, firesafing insulation or sealant at floor slab interfaces.
- Needs no layout or pre-setting of unit anchors at mounting locations to floor slabs.
- Low profile framing members at all conditions means much higher daylight to occupants.
- The **TALON WALL®** design allows immediate completion of interior finishes at the floor below the active installation processes. No more "temporary roofs", or water and mold damage to finishes below.
- Extremely robust member designs can accommodate wide modules and unsupported double spans with no additional internal steel reinforcing or 'kicker' supports at mid-spans.
- **TALON WALL®** supports your LEED goals by using an environmentally friendly, proprietary, reusable metal racking system for delivery to your site. This shipping method allows the complete unload, distribution, and specific placement of units to floors on a high rise building by two crew members in two hours or less.
- The **TALON WALL®** metal racking system also eliminates dumpster and cleanup charges for wood crates and packing material. These racks are returned for re-use on your next delivery.
- The **TALON WALL®** system also includes an option for a proprietary high performance 'zero sightline' concealed ADA/ANSI compliant operable window system for natural ventilation requirements.
- No floor slab notch-outs or grout fill are required for anchors.
- The **TALON WALL®** system improves thermal performance by allowing your design to increase typical module sizes while reducing your facade psf cost.

Our Talon Wall® system has been thoroughly evaluated and confirmed by UL's Mockup Testing Services.



Entekk
GROUP LTD.
Design. Build. Deliver.®

U.S. Patent Nos. 9,752,319; 10,094,111;
10,202,764 and 10,233,638
Canadian Patent No. 2932177

SALES AND INQUIRIES:

info@entekk.com | 708.893.0567
www.entekk.com



Entekk Group LTD. 1650 Vincennes Road, South Holland, IL 60473